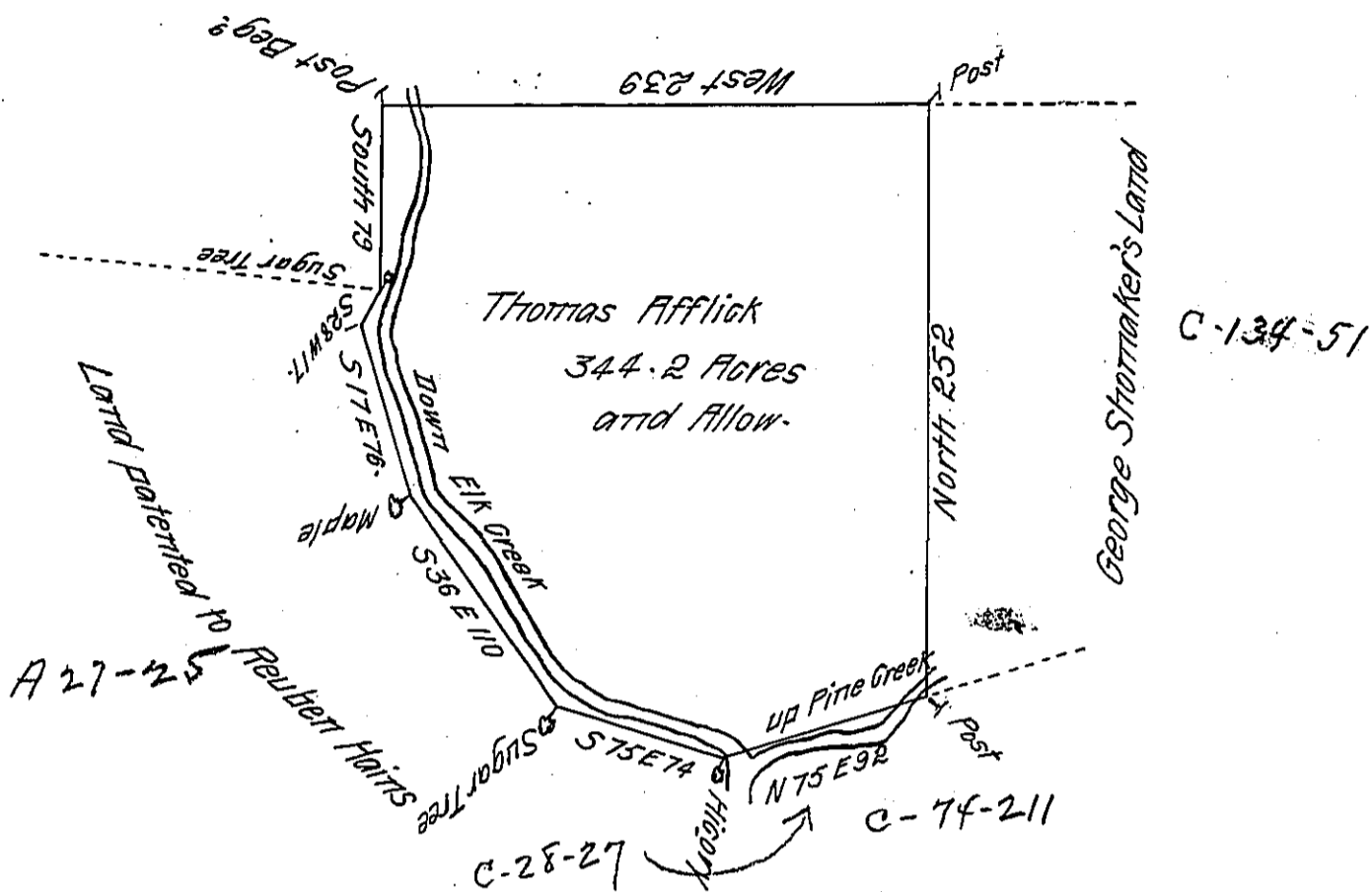


Land survey'd for Musser & Shakespears



The Draught of a Tract of Land called — Situate in Fork of Pine and Elk Creeks, in Potters Township in the County of Northumberland containing Three Hundred and Forty Four Acres 44 Perches with the usual Allowance of Six Acres P^{er} Cent for Roads. Survey'd the 18th day of August Anno Domini 1773 In Pursuance of an Order of Survey to Thomas Afflick Bearing Date at Philad^a the 1st day of August Anno Domini 1766. N^o 297.

To John Lukens Esq^r S. G. }
of Pennsylvania

P^r W^m Maclay

IN TESTIMONY that the above is a copy of the original remaining on file in the Department of Internal Affairs of Pennsylvania, made conformably to an Act of Assembly approved the 16th day of February, 1833, I have hereunto set my Hand and caused the Seal of said Department to be affixed at Harrisburg, this sixteenth day of June 1911

Henry Houck
Secretary of Internal Affairs.